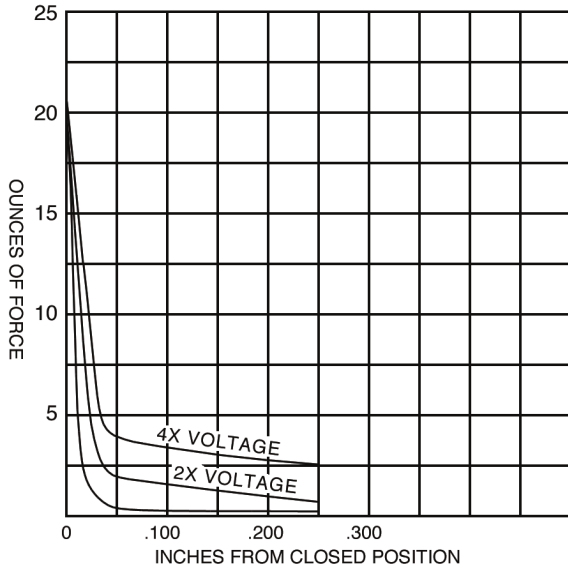


ELECTRO MECHANISMS INC.

515 West Allen Avenue #15 ■ San Dimas ■ California 91773-1469
 Tel:909-394-9953 ■ Fax:909-394-0782 ■ www.electromechanisms.com

FORCE- DUTY CYCLE DC



All forces shown are at 20°C ambient
 Nominal voltage 100% duty cycle
 2 X normal voltage 25% duty cycle
 4 X nominal voltage 6% duty cycle

WATTAGE: 2 Watts Nom.

VOLTAGE: 3 - 6 - 12 Volts DC

STD COILS: 105°C

HIGH TEMP AVAILABLE 180°C, 200°C

5" HEAVY LEADS: Standard

WEIGHT: 0.10 oz

SPEED REACTION TIME - Nominal voltage,
 Max. Stroke, No Spring

SP-25 13.5 msec (2x voltage 9.6 msec)

(4x voltage still faster
 and faster at shorter stroke)

SPECIFICATIONS

WIRE: 155°C magnet wire

TERMINATION: heavy leads - PVC,
 type BU, 5" terminals - solder lugs

TAPE: mylar

BOBBIN: 30% glass filled nylon

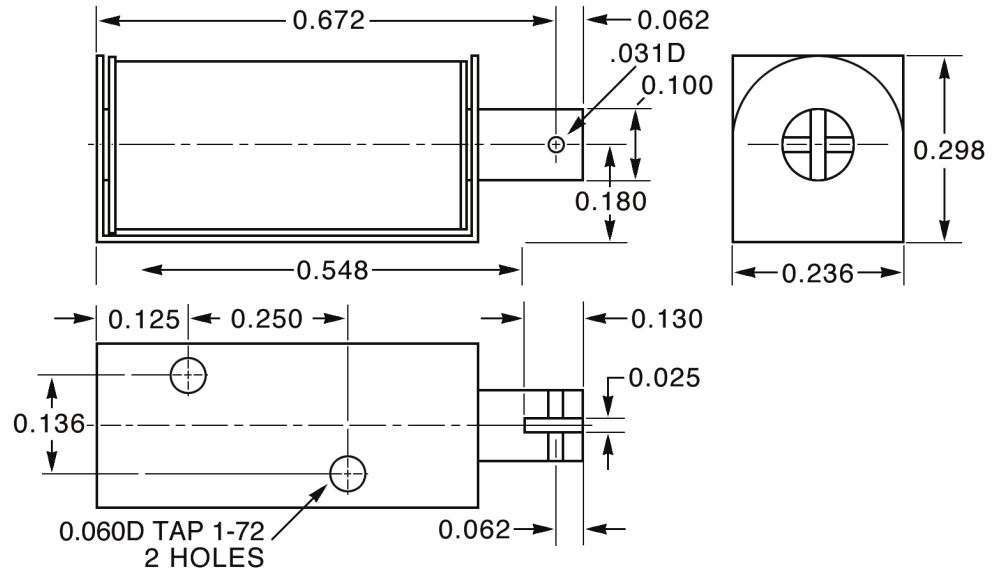
TIP: Delrin

PUSH: phosphorous bronze

TOL: .xxx±.005 Frac.±1/64

MAX. STROKE: equal to diameter of coil

PO-25 PULL TYPE



SP-25 PUSH TYPE

